



General Membership Meeting

October 2021

PLEASE SIGN IN WITH YOUR BADGE/PIN

Program Updates



Upcoming Events

Date	Time	Event
Oct 29	All Day	Annual CART Exercise
Oct 30	0930 – 1200	Arbor Day
Nov 04	1800 – 2000	AFD Dinner & Awards
Nov 06	All Day	Land Navigation
Nov 08	1830 – 1930	Trailer Maintenance
Nov 13	0800 – 1200	EastTex CERT Drill

News

- Volgistics Upgrade
- Budget
- Volunteer Awards
- December Events
- Moulage
- New Members

Volgistics Beta



CERT Volunteer Chris

Home Mail Profile Schedule Service History Time Sheet Account

Using the Volunteer Portal

If you are new to the Portal, watch the 5 minute video below for a quick tutorial on signing up for volunteer opportunities and logging time.

[Click Here](#)

On Site Sign-In Procedure

We often use an electronic sign-in kiosk for larger events (e.g., exercises, disaster simulation, deployments). Watch the video below to become familiar with using the kiosk. Your Volunteer PIN can be found on the My Profile tab in the "Number" field.

[Click Here](#)

CERT Volunteer Chris

Home Mail Profile Schedule Service History Time Sheet Account

Use the next and previous options to move to a different date range.

Today < > September 2021

Sunday	Monday	Tuesday	Wednesday	Thursday	Friday	Saturday
29	30	31	1 6:30pm • Instructor	2 6:30pm • Instructor	3	4
5 6:30pm • Monthly Maintenance	6 6:30pm • Monthly Maintenance	7	8 6:30pm • O. SIM Planning C	9 6:30pm • Instructor	10	11
12	13	14	15 6:30pm • Instru	16 6:30pm • Instru	17	18
19	20	21	22 6:30pm • O. SIM Planning C 7:30pm • Monthly Members	23 6:30pm • Instru	24	25
26	27	28	29 6:30pm • Instru	30	1	2

Edit Schedule Entry

You are currently scheduled for the following:

What

Assignment
Instructor

Site/Place
2021 Basic Training(Classroom)

When

Date
Thursday, September 23, 2021

Start
6:30pm

End
10:00pm

This is a regular schedule entry

[Remove Me](#) [Close](#)



Moulage Independence



Welcome 2021 Graduates!



Simulation & Training



Disaster Simulation

- **17** Responders
- **97** Total Victims (final)
- **35** Total CERT Volunteers
- **416** Preliminary CERT Volunteer hours accrued
- **1:37:00** Total SIM Execution time, per comms log (arrival of bus to completion)
- Debrief scheduled 11/10, 1830



Training

- 17 Basic Training graduates (lost 3)
- 2022 Scheduling
- 2022 Continuing Education
 - What's In Your Bag?
 - Helo LZ Management
 - Chainsaw Safety
 - Baofeng Radio Guide
 - ICS Forms

Logistics



Simulation

- Emergency Response Bags – Used for the 2nd year in a row. It seemed to make getting the teams supplied quicker.
- Logistics support was exceptional

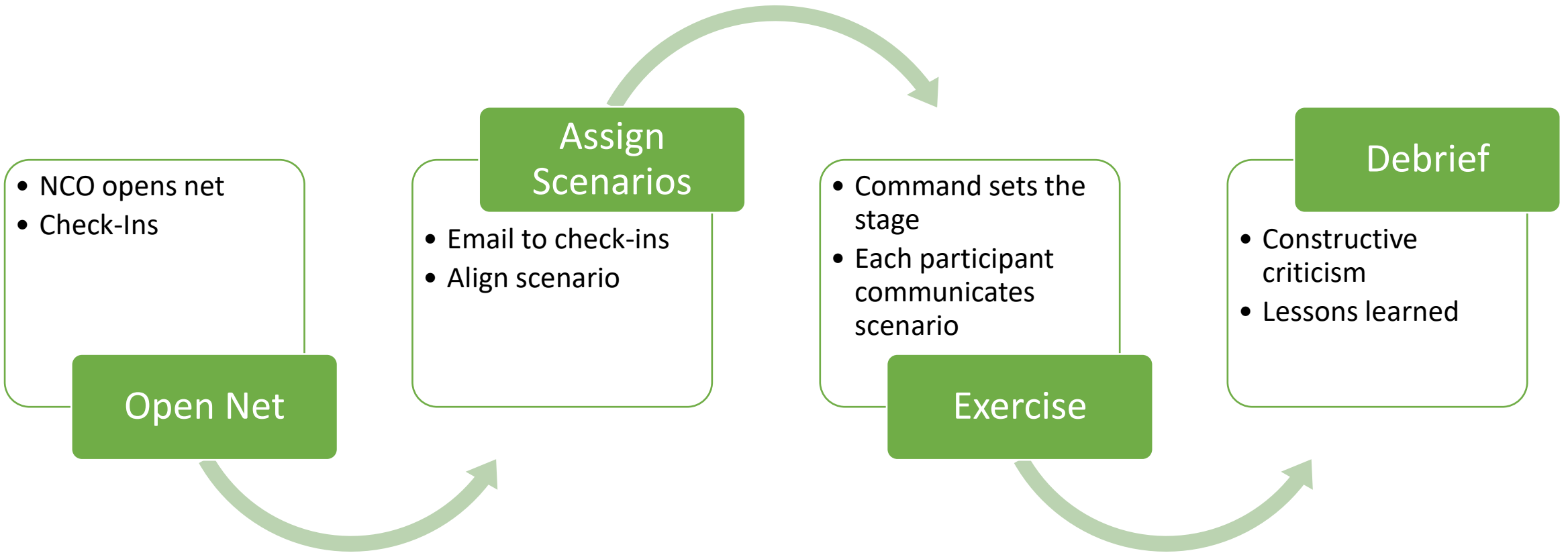
Trailer Maintenance

- November moved to 2nd Monday (11/8)
- No power tool maintenance
- Moving CS-2 items out of CS-1 and back to CS-2
- Re-arraigning bins into correct order

New Items

- AFD has provided two EMT bags that we will stock and put into the Triage / Treatment boxes
- Migrating from Rolled Gauze to Coban Wrap. AFD has provided 3 boxes to get us started. (This is a major upgrade to our Medical Supplies)
- Items for to make CS-2 deployment Ready
 - Net Control Radio box completed
 - Supplies will be ordered in November
 - Discussions with AFD to take place soon for a new location for CS-2

Communications





Open Discussion



FEMA



US National Grid

How to understand and utilize the most interoperable mapping system



FEMA

Background



What is USNG?

- A GRID reference system. Each numbered grid describes a square area (not a point like Lat/Long)
- Derived from Military Grid Reference System (MGRS)
- Basic unit of measure is the meter. Based on UTM (Universal Transverse Mercator) Coordinates

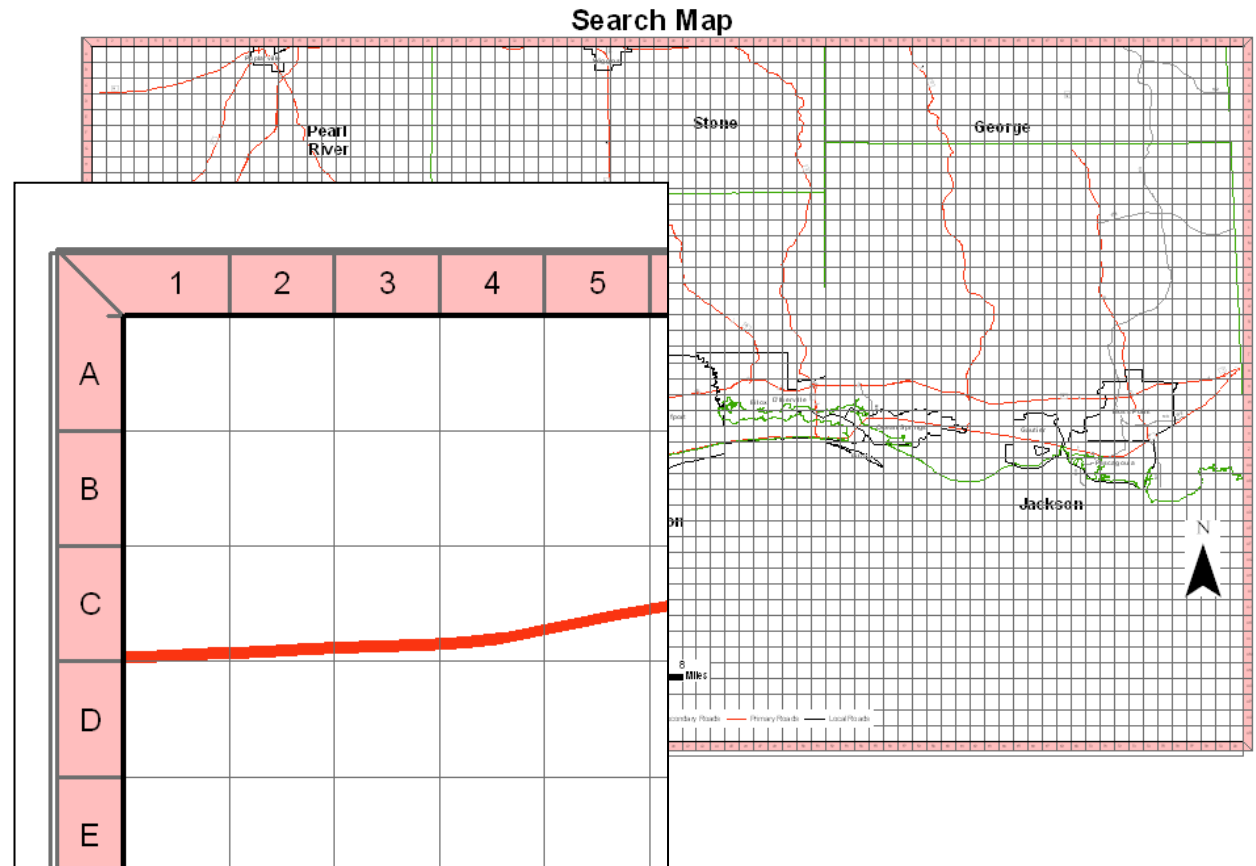
Why use it?

- The USNG ensures a uniform grid mapping system across cities and counties across the country.
- Provides a seamless, standardized reference system during times of crisis.



Lessons Learned from Katrina

- Team tasked to create 3-county grid map:
 - Product contained street map
 - Grid of 1 mile x 1 mile squares.
- Two Days Later
 - Devastation covered larger area than expected.
 - Grid maps did not cover additional areas.
 - A-Z, 1-10 grid could not be expanded.
 - Grid maps all had to be redone.
- Also
 - Many formats were used to communicate location causing additional confusion.
 - Unable to use USNG because map makers were unfamiliar with it.



How to read USNG

The USNG coordinate for the Missouri State Capitol is:

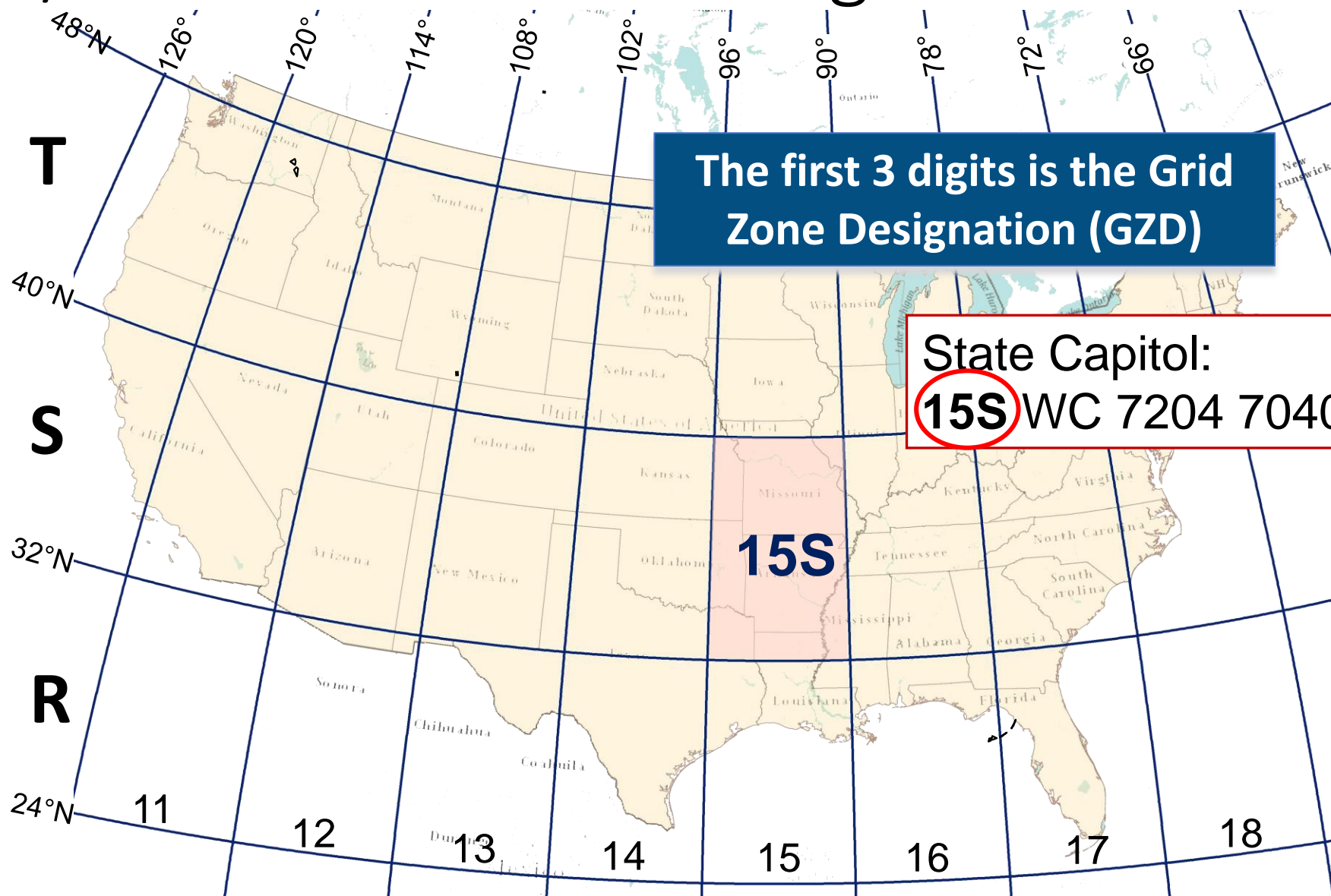


15SWC72047040

What does this mean?

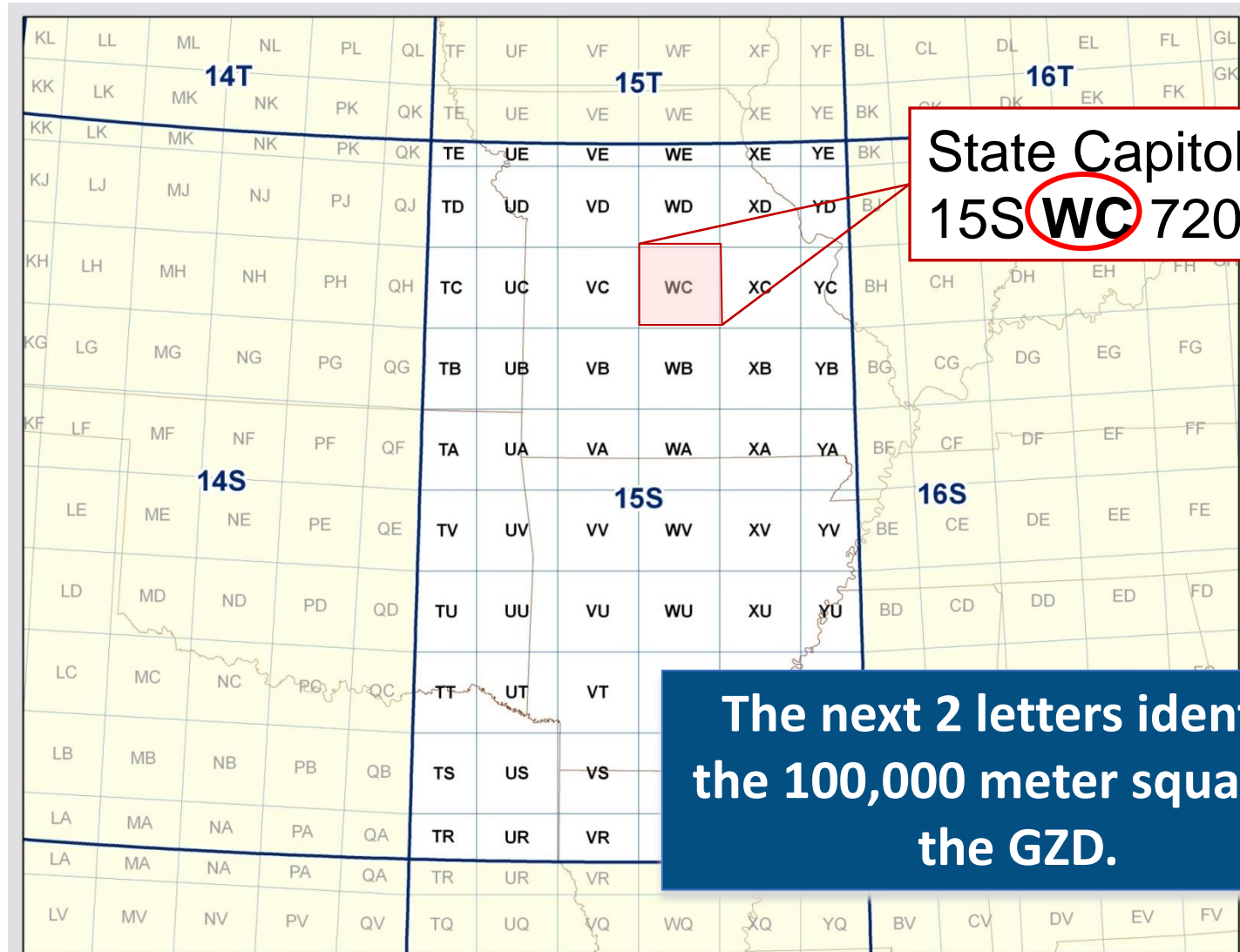
15S WC 7204 7040

UTM/USNG Grid Zone Designations



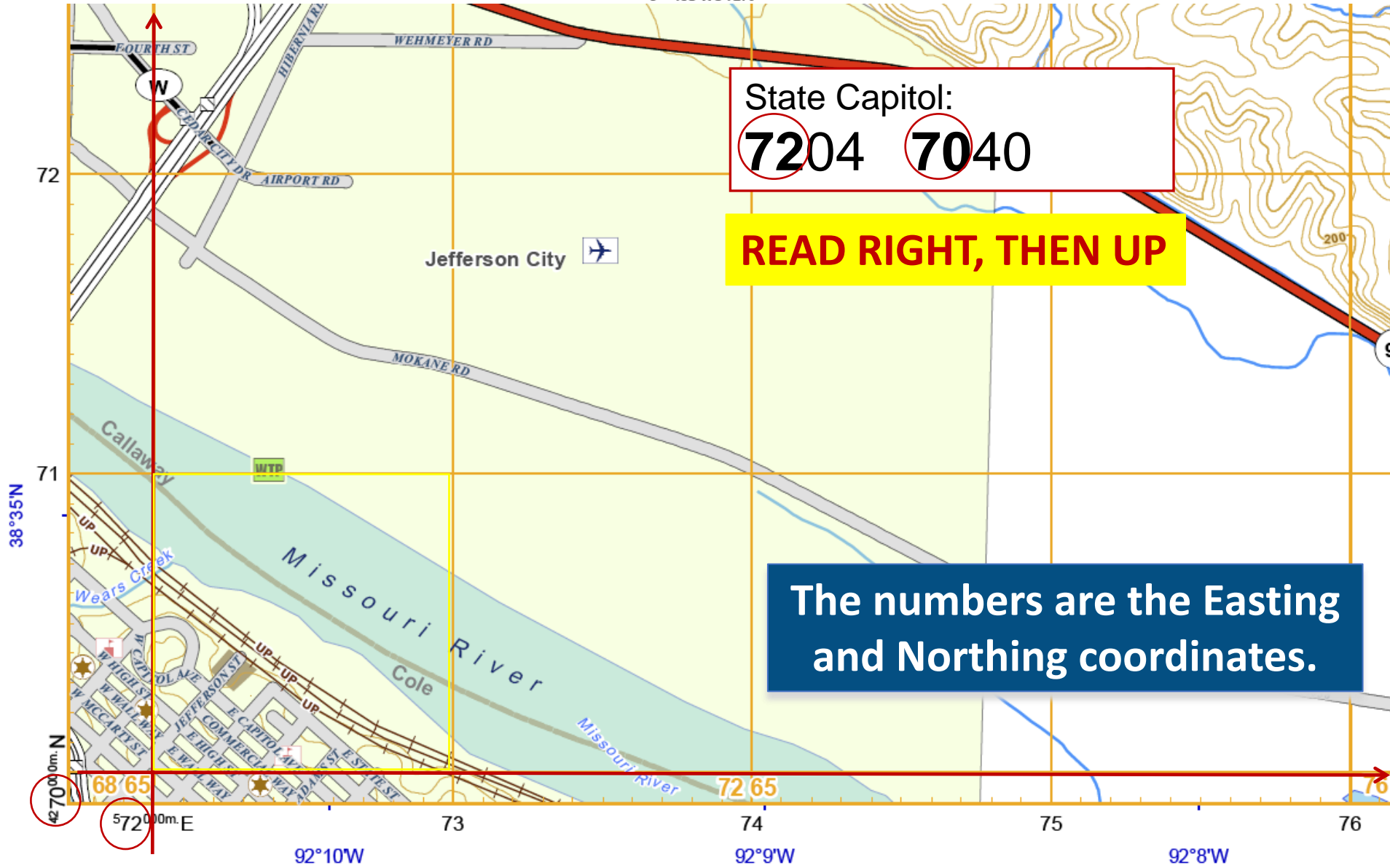
100,000m Square ID

4300



State Capitol:
15S **WC** 7204 7040

The next 2 letters identify
the 100,000 meter square in
the GZD.



State Capitol:
7204 **7040**

READ RIGHT, THEN UP

The numbers are the Easting and Northing coordinates.

U.S. National Grid
 100,000 - m Square ID
 WC



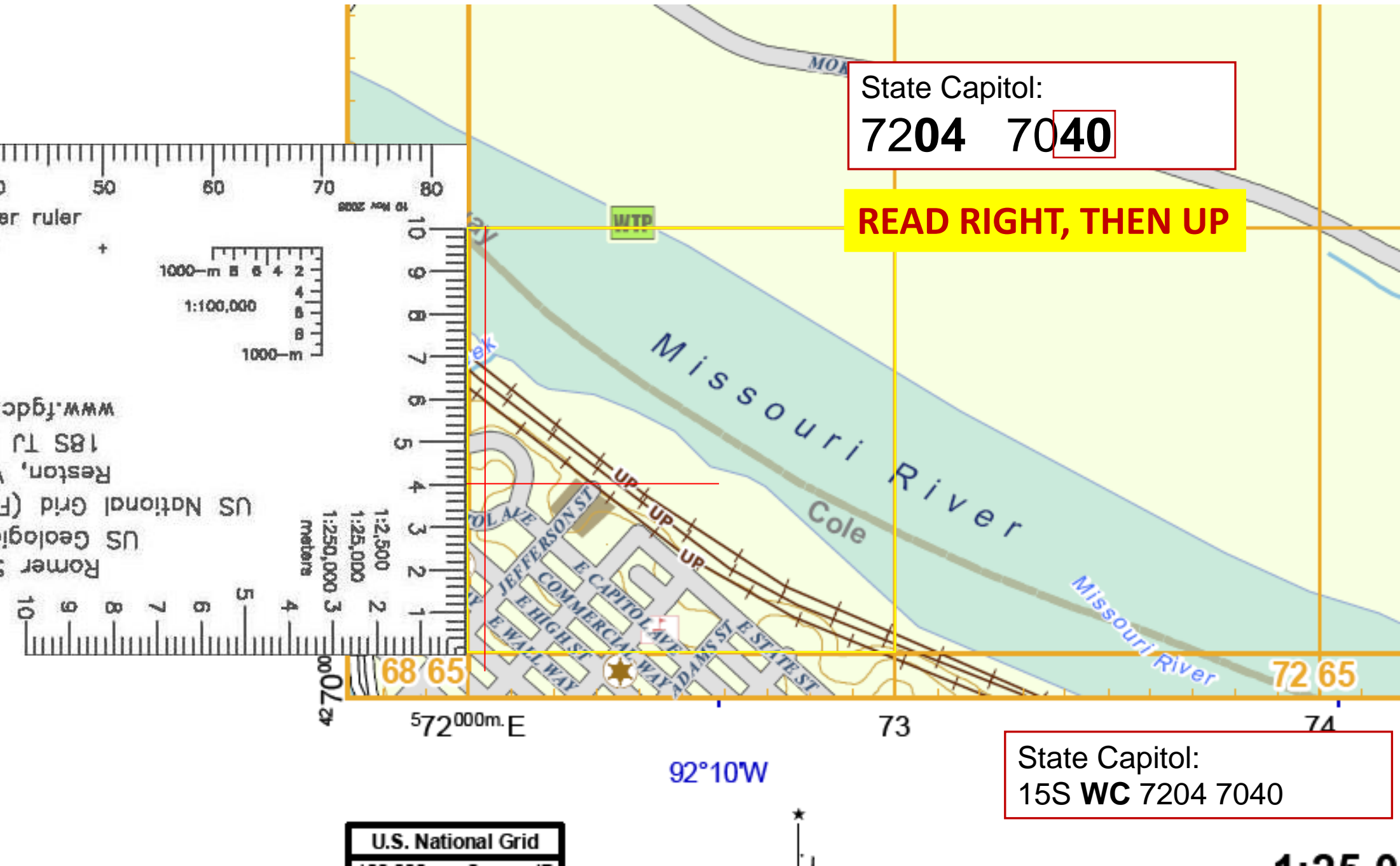
1:25,000



State Capitol:
7204 7040

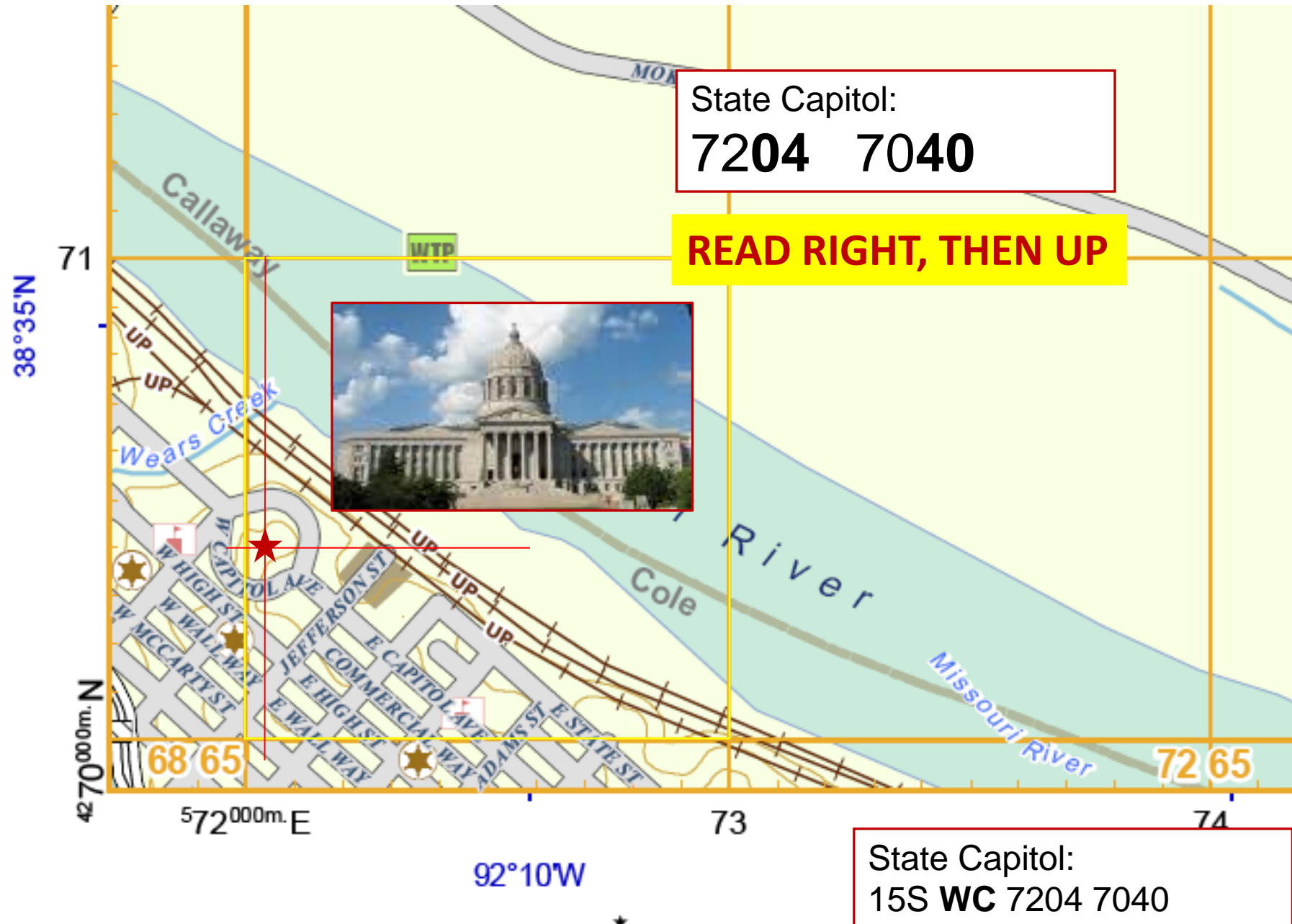
READ RIGHT, THEN UP

State Capitol:
15S WC 7204 7040



U.S. National Grid

1:250,000



U.S. National Grid

1:25,000

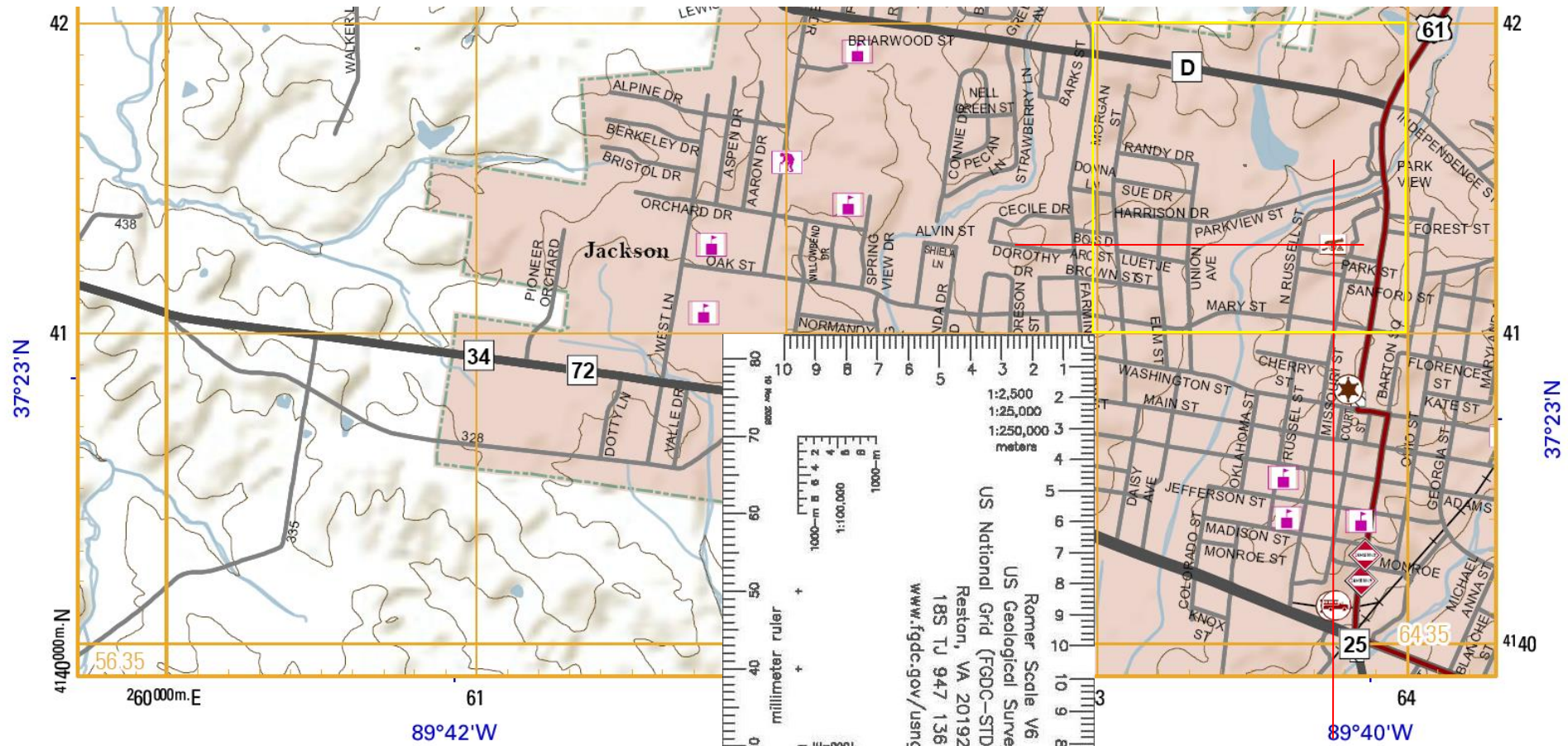
Easting and Northing – Number of Digits

The more digits used, the smaller the grid coordinates and the more accurate the location.

- 72041 70408 10 digits locates the area within a 1 x 1 meter square
- 7204 7040 8 digits locates the area within a 10 x 10 meter square
- 720 704 6 digits locates the area within a 100 x 100 meter square
- 72 70 4 digits locates the area within a 1000 x 1000 meter square

READ RIGHT, THEN UP

Find: 16S BG
6376 4129



U.S. National Grid
100,000 - m Square ID

BG

Grid Zone Designation
16S

Datum is NAD 83
USNG 1,000m grid
Contour Lines = 10 Meters

GN

1°9'
20 MILS
1°38'
29 MILS

UTM GRID AND 2010 MAGNETIC NORTH DECLINATION AT CENTER OF SHEET

Not all data layers therefore the map scale applied does not necessarily equate to the implied horizontal and vertical positional accuracy. 30 August 2010

US National Grid (FGDC-STD-011-2001)
US Geological Survey
Romer Scale V6
Reston, VA 20192
1 85 T J 947 136
www.fgdc.gov/usng

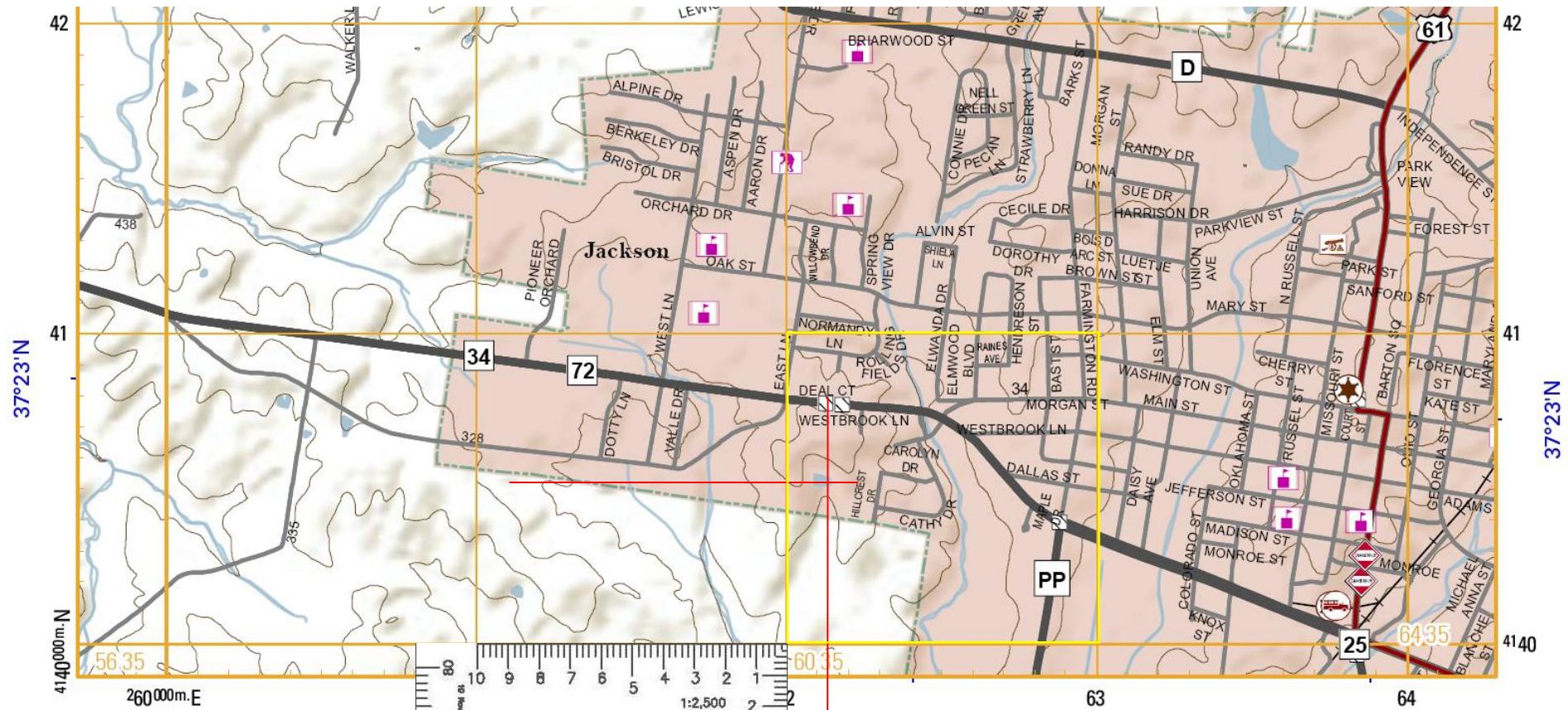
USNG Pg#: 16S BG 6040
Cape Girardeau, MO

5645	6045	6445
5640	6040	6440
5635	6035	6435

Adjoining 4 km x 5 km Pages

READ RIGHT, THEN UP

Find: 16S BG
6212 4050

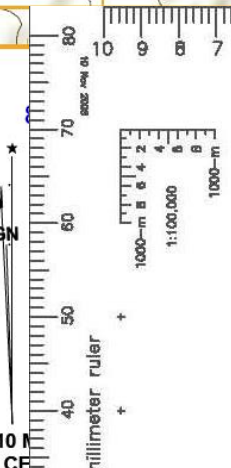


U.S. National Grid	
100,000 - m Square ID	
BG	
Grid Zone Designation 16S	

Datum is NAD 83
USNG 1,000m grid
Contour Lines = 10 Meters

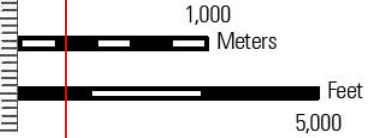
1°9'
20 MILS
1°38'
29 MILS

UTM GRID AND 2010
DECLINATION AT CE



1:2,500
1:25,000
1:250,000
meters

Romer Scale
US Geological Survey
US National Grid (FGDC-S
Reston, VA 2011
18S TJ 947 1
www.fgdc.gov/ur



FOOD
ed maintain the same accuracy level,
ed does not necessarily equate to the
positional accuracy. 30 August 2010

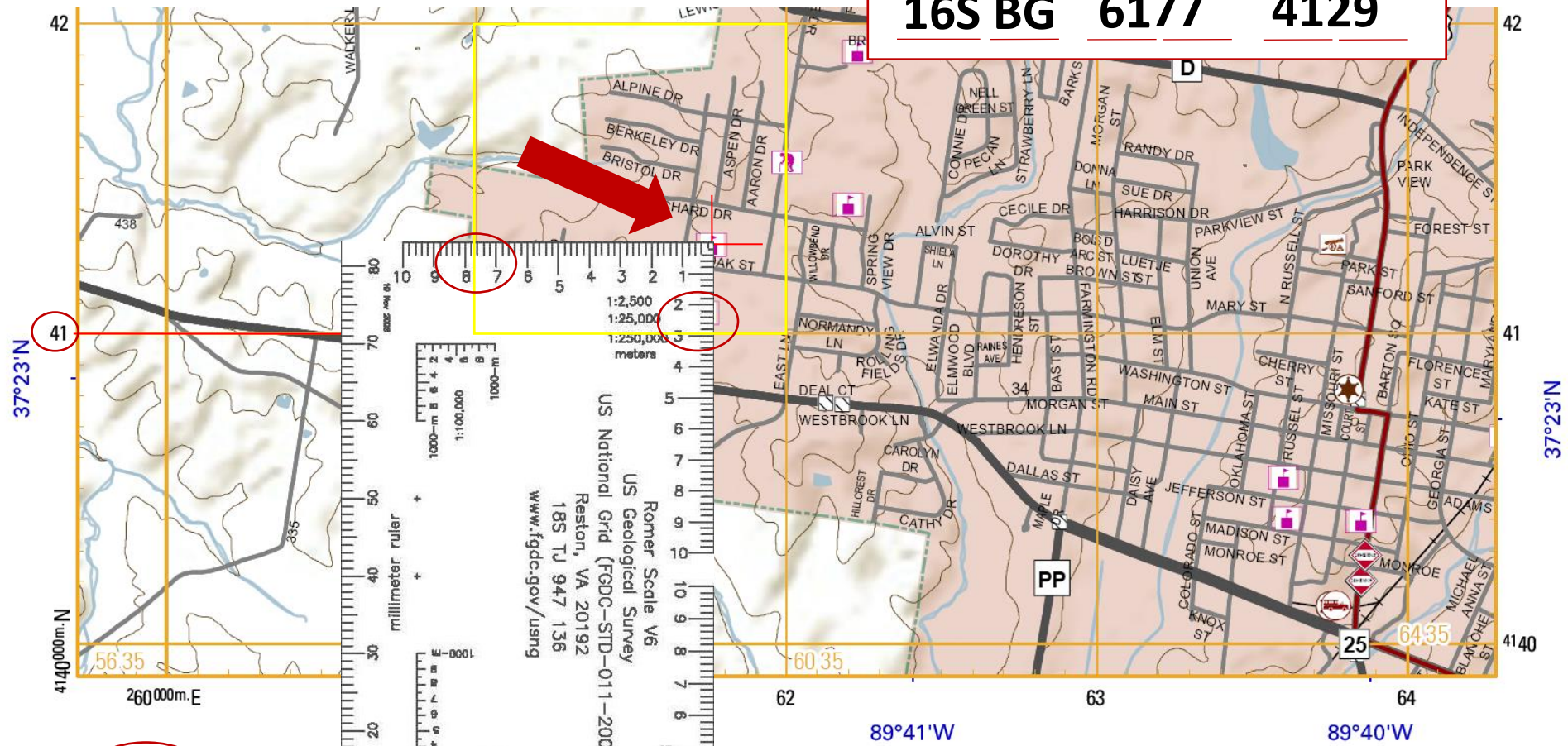
USNG Pg#: 16S BG 6040
Cape Girardeau, MO

5645	6045	6445
5640	6040	6440
5635	6035	6435

Adjoining 4 km x 5 km Pages

READ RIGHT, THEN UP

**Find USNG Coordinate:
16S BG 6177 4129**



U.S. National Grid
100,000 - m Square ID

BG

Grid Zone Designation
16S

Datum is NAD 83
USNG 1,000m grid
Contour Lines = 10 Meters

UTM GRID AND 2010 MAGNETIC NORTH DECLINATION AT CENTER OF SHEET

US National Grid (FGDC-STD-011-2001)
US Geological Survey
Romner Scale V6
Reston, VA 20192
185 TJ 947 136
www.fgdc.gov/usng

1:25,000



FOUO
Not all data layers represented maintain the same accuracy level, therefore the map scale applied does not necessarily equate to the implied horizontal and vertical positional accuracy. 30 August 2010

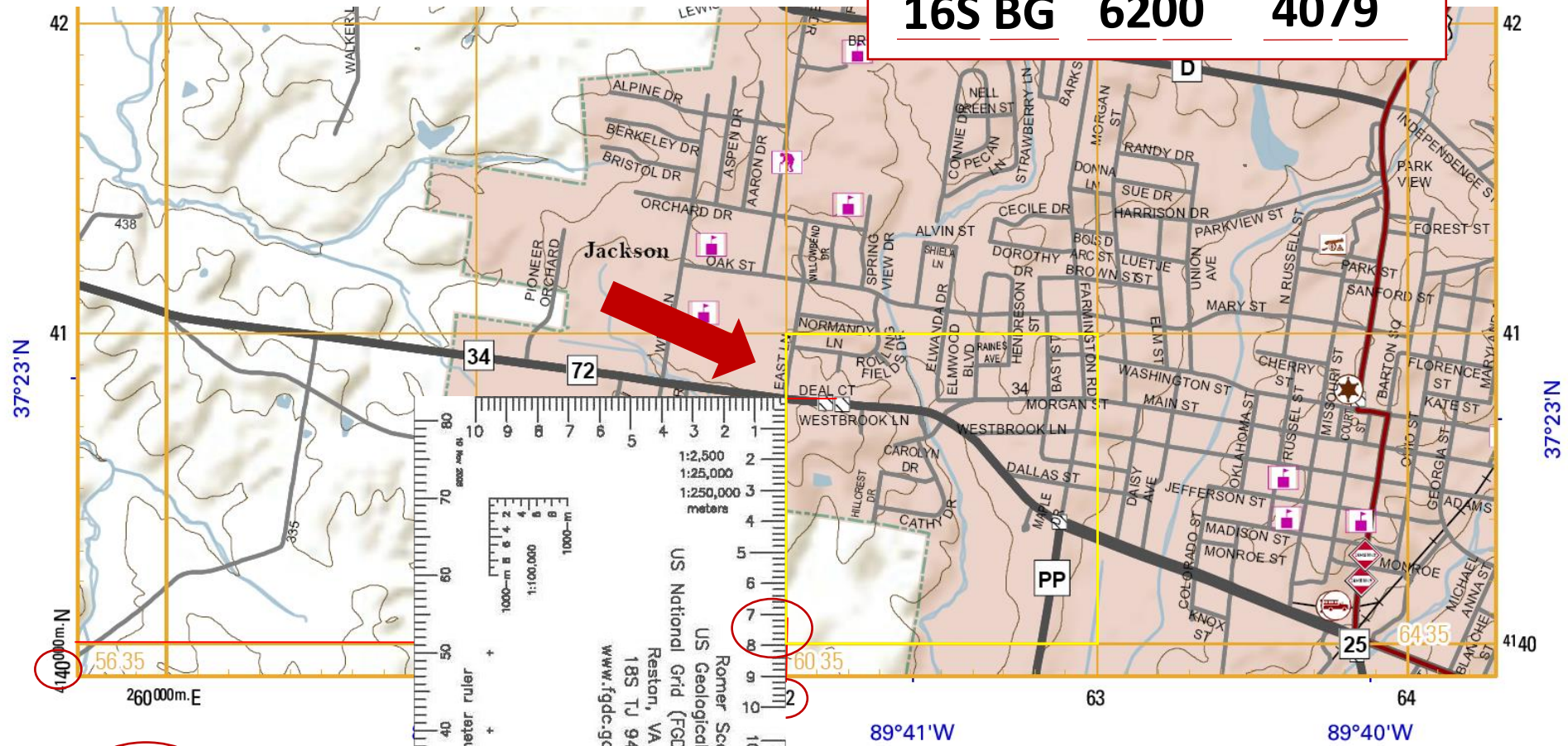
USNG Pg#: 16S BG 6040
Cape Girardeau, MO

5645	6045	6445
5640	6040	6440
5635	6035	6435

Adjoining 4 km x 5 km Pages

READ RIGHT, THEN UP

**Find USNG Coordinate:
16S BG 6200 4079**



U.S. National Grid
100,000 - m Square ID

BG

Grid Zone Designation 16S

Datum is NAD 83
USNG 1,000m grid
Contour Lines = 10 Meters

UTM GRID AND 2010 DECLINATION AT CE

Romer Scale V6
US Geological Survey
US National Grid (FGDC-STD-011-2001)
Reston, VA 20192
18S TJ 947 136
www.fgdc.gov/usng

1:2,500
1:25,000
1:250,000
meters

1000-m 1:100,000
1000-m 1:250,000

millimeter ruler

1000-m 1:100,000
1000-m 1:250,000

1:2,400
1:24,000
meters

25,000

1,000 Meters

5,000 Feet

USNG Pg#: 16S BG 6040
Cape Girardeau, MO

5645	6045	6445
5640	6040	6440
5635	6035	6435

Adjoining 4 km x 5 km Pages

USNG Tools

Online/Desktop



Mission Manager (.net)



Arc GIS (.com)

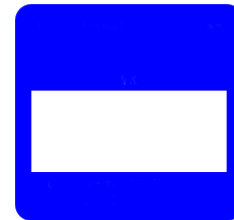


Google Earth

Mobile



Military GPS (MilGPS)



USNG App (.org)



Solocator



Open Discussion



FEMA