



General Membership Meeting

October 2022



PLEASE SIGN IN

Class of 2022



Active Shooter Drills



Allen

10/17 – 10/19, 0900 & 1300

Vaughn Elementary

- Moulage recap
- Video in production

Active Shooter Drills



McKinney

Weekdays, 10/03 – 10/13

1230 – 1700

Baylor, Scott, and White

Weekdays, 10/17 – 11/04

1230 – 1700

Grace Fellowship Church



CERT & Animal Services



GUEST SPEAKER

Tammy Chow-Hayes

Senior Animal Control Officer

Mike Pruden, Communications



Neal van der Upwich - Training





Training

Neal van der Upwich



FEMA

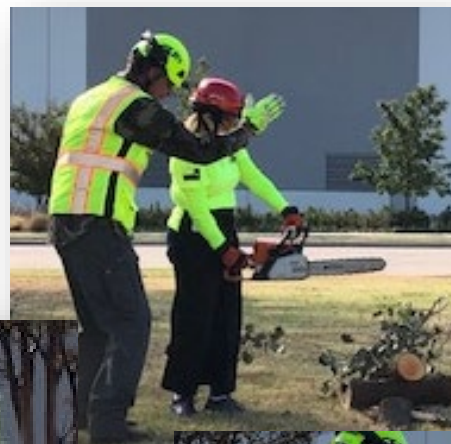
2022 Training Calendar



Month	In Service Training (standalone event)	Monthly Refresher (monthly meeting)	ICS/CERT Form of the Month
Jan		✓ Winter Deployment Prep	
Feb	✓ What's In Your Bag?	✓ Deployment Procedures	✓ 2/211 – Resource Check In
Mar	✓ Land Navigation Recap	✓ Allen Map Books	✓ 6/309 – Communications Log
Apr	✓ Helicopter LZ Training	✓ Trailer Tour	✓ 214 – Activity Log
May	✓ Mock Deployment	✓ Trailer Loadout Procedures	✓ 7/303 - Equipment Inventory
Jun	✓ CPR / Stop the Bleed	✓ Chainsaw Safety	✓ 4/201 - Briefing Assignment
Jul			✓ 3/204 – Assignment Tracking
Aug	✓ Chainsaw Use, Part 1	✓ Heat Stroke & Exhaustion, Search Marks	
Sep		✓ Disaster Psychology, Triage	
Oct	✓ Chainsaw Use, Part 2	Radio Programming	
Nov	Baofeng Radios	Meeting TBD	



Chainsaw Use & Safety, Part II



Get to Know Your Radio



Baofeng Radio Tutorial

Thursday, November 03

1830 – 2030

Central Fire Station

- ✓ Hardware & accessories
- ✓ Radio vernacular
- ✓ Call sign protocols
- ✓ Best practices
- ✓ Field operations



CERT Baofeng Radio Training



FEMA

ICS-205 Pg 1



INCIDENT RADIO COMMUNICATIONS PLAN (ICS 205)

1. Incident Name: Allen TX CERT Simulation 2021				2. Date/Time Prepared: Date: 6/15/2021 Time: 08:00				3. Operational Period: Date From: 6/28/2021 Date To: 6/28/2021 Time From: 08:00 Time To: 17:00			
4. Basic Radio Channel Use:											
Zone Grp.	Ch #	Function	Channel Name/Trunked Radio System Talkgroup	Assignment	RX Freq N or W	RX Tone/NAC	TX Freq N or W	TX Tone/NAC	Mode (A, D, or M)	Remarks	
1	1	Logistics/Traffic	CERT A	Simulation Control	446.025	79.7 Hz	446.025	79.7 Hz	A	Exercise Coordination	
2	2	Search and Rescue	CERT B	Team Leaders	446.050	79.7 Hz	446.050	79.7 Hz	A	Inter Team Communications	
3	3	Medical Triage	CERT C	Triage	446.075	79.7 Hz	446.075	79.7 Hz	A	Medical Triage and Talk Around	
4	4	Extended Range Communications	CERT RPT Allen	EOC	441.300	179.9 Hz	446.300	179.9	A	Extended Range and Interopability	
5	5	Interoperability	CERT RPT Lucas	Lucas CERT/FD	442.2125	91.5 Hz	447.2125	91.5 Hz	A	Mutual Aid / Backup Repeater	
6	6	Intra-Team Communications	TEAM 1	TEAM 1	467.5625	79.7 Hz	467.5625	79.7 Hz	A	Team 1 Intra-team Communications/FRS Ch 8	
7	7	Intra-Team Communications	TEAM 2	TEAM 2	467.5875	79.7 Hz	467.5875	79.7 Hz	A	Team 2 Intra-team Communications/FRS Ch 9	
8	8	Intra-Team Communications	TEAM 3	TEAM 3	467.6125	79.7 Hz	467.6125	79.7 Hz	A	Team 3 Intra team Communications/FRS CH 10	



ICS-205 Pg 2



INCIDENT RADIO COMMUNICATIONS PLAN (ICS 205)

Incident Name: Allen TX CERT Simulation 2021				2. Date/Time Prepared: Date: 6/15/2021 Time: 08:00				3. Operational Period: Date From: 6/28/2021 Date To: 6/28/2021 Time From: 08:00 Time To: 17:00			
4. Basic Radio Channel Use:											
Zone Grp.	Ch #	Function	Channel Name/Trunked Radio System Talkgroup	Assignment	RX Freq N or W	RX Tone/NAC	TX Freq N or W	TX Tone/NAC	Mode (A, D, or M)	Remarks	
9	9	Intra-Team Communications	TEAM 4	TEAM 4	467.6375	79.7 Hz	467.6375	79.7 Hz	A	Team 4 Intra-team Communications/FRS CH 11	
10	10	Intra-Team Communications	TEAM 5	TEAM 5	467.6625	79.7 Hz	467.6625	79.7 Hz	A	Team 5 Intra-team Communications/FRS CH 12	
11	11	Intra-Team Communications	TEAM 6	TEAM 6	467.6875	79.7 Hz	467.6875	79.7 Hz	A	Team 6 Intra-team Communications/FRS Ch 13	
12	12	Intra-Team Communications	TEAM 7	TEAM 7	467.7125	79.7 Hz	467.7125	79.7 Hz	A	Team 7 Intra-team Communications/FRS Ch 14	
13	13	Intra-Team Communications	FRS/GMRS 19	Hi Power 1	462.65	None	462.65	None	A	Intra-Team / Extended Range	
14	14	Intra-Team Communications	FRS/GMRS 20	Hi Power 2	462.67	None	462.67	None	A	Intra-Team / Extended Range	
15	15	Intra-Team Communications	FRS/GMRS 21	Hi Power 3	467.70	None	462.70	None	A	Intra-Team / Extended Range	
16	16	Intra-Team Communications	FRS/GMRS 22	Hi Power 4	462.72	None	462.72	None	A	Intra-Team / Extended Range	



Channels 1 – 16



Channels 1 – 5 Amateur Radio Channels

Channels 6 – 16 FRS/GMRS Low Power Channels

Location	Name	Frequency	Duplex	Offset	Tone	rToneFreq	cToneFreq	DtcsCode	DtcsPolar	Mode	TStep	Skip
0	RPT DIR	441.3			0 TSQL	179.9	179.9	23	NN	FM	5	S
1	CERT A	446.025			0 TSQL	79.7	79.7	23	NN	FM	5	S
2	CERT B	446.05			0 TSQL	79.7	79.7	23	NN	FM	5	S
3	CERT C	446.075			0 TSQL	79.7	79.7	23	NN	FM	5	S
4	CERT RP	441.3	+		5 TSQL	179.9	179.9	23	NN	FM	5	
5	CERT LU	442.2125	+		5 Tone	91.5	88.5	23	NN	FM	5	
6	TEAM 1	467.5625			0 TSQL	79.7	79.7	23	NN	NFM	5	S
7	TEAM 2	467.5875			0 TSQL	79.7	79.7	23	NN	NFM	5	S
8	TEAM 3	467.6125			0 TSQL	79.7	79.7	23	NN	NFM	5	S
9	TEAM 4	467.6375			0 TSQL	79.7	79.7	23	NN	NFM	5	S
10	TEAM 5	467.6625			0 TSQL	79.7	79.7	23	NN	NFM	5	S
11	TEAM 6	467.6875			0 TSQL	79.7	79.7	23	NN	NFM	5	S
12	TEAM 7	467.7125			0 TSQL	79.7	79.7	23	NN	NFM	5	S
13	F19 2W	462.65			0	88.5	88.5	23	NN	NFM	5	S
14	F20 2W	462.675			0	88.5	88.5	23	NN	NFM	5	S
15	F21 2W	462.7			0	88.5	88.5	23	NN	NFM	5	S
16	F22 2W	462.725			0	88.5	88.5	23	NN	NFM	5	S



Channels 17 – 37



17	COLLIN	147.18	+	0.6	Tone	107.2	88.5	23	NN	FM	5
18	COLLIN	146.74	-	0.6	Tone	110.9	88.5	23	NN	FM	5
19	COLLIN	444.25	+	5	Tone	79.7	88.5	23	NN	FM	5
20	DALLAS	146.88	-	0.6	Tone	110.9	88.5	23	NN	FM	5
21	DALLAS	146.96	-	0.6	Tone	110.9	88.5	23	NN	FM	5
22	DALLAS	442.075	+	5	Tone	110.9	88.5	23	NN	FM	5
23	DENTON	146.92	-	0.6	Tone	110.9	88.5	23	NN	FM	5
24	DENTON	145.17	-	0.6	Tone	110.9	88.5	23	NN	FM	5
25	GRAYSON	147	+	0.6	Tone	110.9	88.5	23	NN	FM	5
26	GRAYSON	147.28	+	0.6	Tone	107.2	88.5	23	NN	FM	5
27	HUNT	146.78	-	0.6	Tone	114.8	88.5	23	NN	FM	5
28	HUNT	147.16	+	0.6	Tone	110.9	88.5	23	NN	FM	5
29	ROCKWAL	441.525	+	5	Tone	141.3	88.5	23	NN	FM	5
30	FANNIN	145.47	-	0.6	Tone	100	88.5	23	NN	FM	5
31	FANNIN	145.41	+	0.6	Tone	100	88.5	23	NN	FM	5
33	COOKE	147.34	+	0.6	Tone	100	88.5	23	NN	FM	5
34	COOKE	145.29	-	0.6	Tone	100	88.5	23	NN	FM	5
35	KAUFMAN	147.28	+	0.6	Tone	136.5	88.5	23	NN	FM	5
36	ELLIS	145.41	-	0.6	Tone	162.2	88.5	23	NN	FM	5
37	TARRANT	146.94	-	0.6	Tone	110.9	88.5	23	NN	FM	5

Channels 40 – 60



40	CRLTN	145.21	-	0.6	Tone	110.9	88.5	23	NN	FM	5
41	SACHSE	145.25	-	0.6	Tone	141.3	88.5	23	NN	FM	5
42	MESQUIT	145.31	-	0.6	Tone	110.9	88.5	23	NN	FM	5
43	MCKINE	145.35	-	0.6	Tone	100	88.5	23	NN	FM	5
44	DALLAS	145.43	-	0.6	Tone	110.9	88.5	23	NN	FM	5
45	IRVING	145.45	-	0.6		88.5	88.5	23	NN	FM	5
46	DALLAS	146.64	-	0.6	Tone	118.8	88.5	23	NN	FM	5
47	GARLAND	146.66	-	0.6	Tone	110.9	88.5	23	NN	FM	5
48	IRVING	146.72	-	0.6	Tone	110.9	88.5	23	NN	FM	5
49	MARC	146.74	-	0.6	Tone	110.9	88.5	23	NN	FM	5
50	DARC	146.88	-	0.6	Tone	110.9	88.5	23	NN	FM	5
51	CED HIL	147.06	+	0.6	Tone	110.9	88.5	23	NN	FM	5
52	RCHDSON	147.12	+	0.6		88.5	88.5	23	NN	FM	5
53	PARK	147.18	+	0.6	Tone	107.2	88.5	23	NN	FM	5
54	GARLAND	147.24	+	0.6		88.5	88.5	23	NN	FM	5
55	CED HIL	147.26	+	0.6	Tone	85.4	88.5	23	NN	FM	5
56	ALLEN	441.3	+	5	Tone	179.9	88.5	23	NN	FM	5
57	GARLAND	441.35	+	5	Tone	100	88.5	23	NN	FM	5
58	ALLEN	441.5	+	5	Tone	110.9	88.5	23	NN	FM	5
59	MURPHY	441.7	+	5		88.5	88.5	23	NN	FM	5
60	RCHRDSN	441.875	+	5	Tone	131.8	88.5	23	NN	FM	5



Channels 67 – 87



67	2M CALL	146.52		0		88.5	88.5	23	NN	FM	5	S
68	70CM CA	446		0		88.5	88.5	23	NN	FM	5	S
69	SIM640	146.4		0		88.5	88.5	23	NN	FM	5	S
70	SIM642	146.42		0		88.5	88.5	23	NN	FM	5	S
71	SIM644	146.44		0		88.5	88.5	23	NN	FM	5	S
72	SIM646	146.46		0		88.5	88.5	23	NN	FM	5	S
73	SIM648	146.48		0		88.5	88.5	23	NN	FM	5	S
74	SIM650	146.5		0		88.5	88.5	23	NN	FM	5	S
75	SIM654	146.54		0		88.5	88.5	23	NN	FM	5	S
76	SIM656	146.56		0		88.5	88.5	23	NN	FM	5	S
77	SIM658	146.58		0		88.5	88.5	23	NN	FM	5	S
78	SIM660	146.6		0		88.5	88.5	23	NN	FM	5	S
79	SIM740	147.4		0		88.5	88.5	23	NN	FM	5	S
80	SIM742	147.42		0		88.5	88.5	23	NN	FM	5	S
81	SIM744	147.44		0		88.5	88.5	23	NN	FM	5	S
82	SIM746	147.46		0		88.5	88.5	23	NN	FM	5	S
83	SIM748	147.48		0		88.5	88.5	23	NN	FM	5	S
84	SIM750	147.5		0		88.5	88.5	23	NN	FM	5	S
85	SIM752	147.52		0		88.5	88.5	23	NN	FM	5	S
86	SIM754	147.54		0		88.5	88.5	23	NN	FM	5	S
87	SIM756	147.56		0		88.5	88.5	23	NN	FM	5	S

Channels 90 – 110



90	FRS 1	462.5625		0	88.5	88.5	23	NN	NFM	5	S
91	FRS 2	462.5875		0	88.5	88.5	23	NN	NFM	5	S
92	FRS 3	462.6125		0	88.5	88.5	23	NN	NFM	5	S
93	FRS 4	462.6375		0	88.5	88.5	23	NN	NFM	5	S
94	FRS 5	462.6625		0	88.5	88.5	23	NN	NFM	5	S
95	FRS 6	462.6875		0	88.5	88.5	23	NN	NFM	5	S
96	FRS 7	462.7125		0	88.5	88.5	23	NN	NFM	5	S
97	FRS 8	467.5625		0	88.5	88.5	23	NN	NFM	5	S
98	FRS 9	467.5875		0	88.5	88.5	23	NN	NFM	5	S
99	FRS 10	467.6125		0	88.5	88.5	23	NN	NFM	5	S
100	FRS 11	467.6375		0	88.5	88.5	23	NN	NFM	5	S
101	FRS 12	467.6625		0	88.5	88.5	23	NN	NFM	5	S
102	FRS 13	467.6875		0	88.5	88.5	23	NN	NFM	5	S
103	FRS 14	467.7125		0	88.5	88.5	23	NN	NFM	5	S
104	FRS 15	462.55		0	88.5	88.5	23	NN	NFM	5	S
105	FRS 16	462.575		0	88.5	88.5	23	NN	NFM	5	S
106	FRS 17	462.6		0	88.5	88.5	23	NN	NFM	5	S
107	FRS 18	462.625		0	88.5	88.5	23	NN	NFM	5	S
108	FRS 19	462.65		0	88.5	88.5	23	NN	NFM	5	S
109	FRS 20	462.675		0	88.5	88.5	23	NN	NFM	5	S
110	FRS 21	462.7		0	88.5	88.5	23	NN	NFM	5	S



Channels 112 – 120

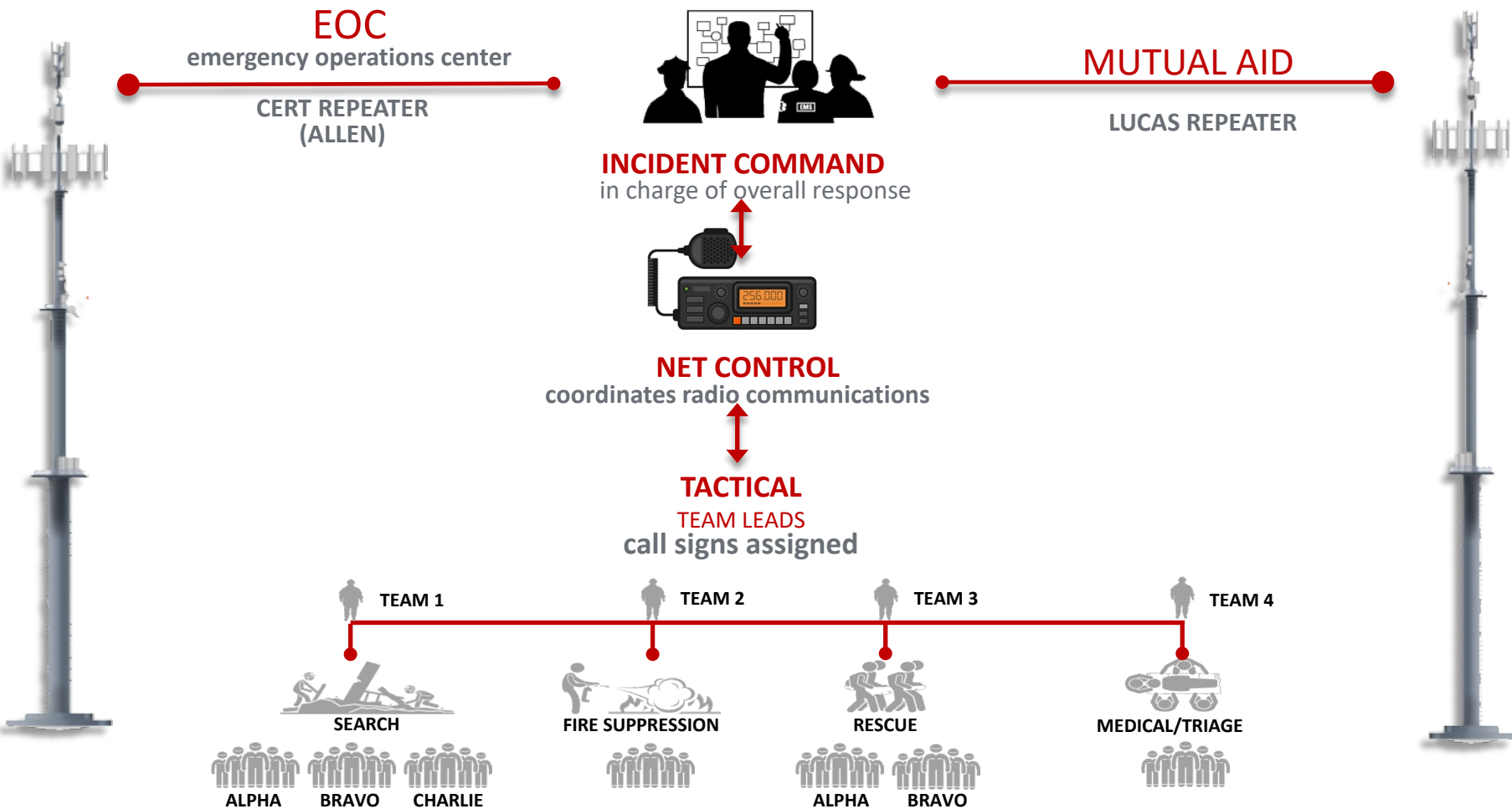


Channels 112 – 120 are Public Safety Channels. Do not use these channels unless directed to by CERT Command

112	VCALL	155.7525		0	TSQL	156.7	156.7	23	NN	NFM	5	S
113	VTAC 11	151.1375		0	TSQL	156.7	156.7	23	NN	NFM	5	S
114	VTAC 12	154.4525		0	TSQL	156.7	156.7	23	NN	NFM	5	S
115	UCALL	453.2125		0	TSQL	156.7	156.7	23	NN	NFM	5	S
116	UTAC 41	453.4625		0	TSQL	156.7	156.7	23	NN	NFM	5	S
117	UTAC 42	453.7125		0	TSQL	156.7	156.7	23	NN	NFM	5	S
118	UTAC 43	453.8625		0	TSQL	156.7	156.7	23	NN	NFM	5	S
119	VFIRE21	154.28		0	TSQL	156.7	156.7	23	NN	NFM	5	S
120	VFIRE22	154.265		0	TSQL	156.7	156.7	23	NN	NFM	5	S
121	NWS	162.4		0		88.5	88.5	23	NN	FM	5	S
122	ULOC1	441.025		0		88.5	88.5	23	NN	FM	5	S
123	ULOC2	441.05		0		88.5	88.5	23	NN	FM	5	S
124	ULOC3	441.075		0		88.5	88.5	23	NN	FM	5	S
125	ULOC4	446.025		0		88.5	88.5	23	NN	FM	5	S
126	ULOC5	446.05		0		88.5	88.5	23	NN	FM	5	S
127	ULOC6	446.075		0		88.5	88.5	23	NN	FM	5	S



CERT EMCOM



PRO Words - Interoperable

CAN: Conditions Actions Needs

PAR: Personnel Accountability Report

IN SERVICE: CERT team is now Available for assignment

OUT OF SERVICE: CERT team is now Un-Available for assignment

IN ROUTE: On our way to the assigned location

ON SCENE: Have arrived at the assigned location

AFFIRMATIVE: Yes, correct

NEGATIVE: No

PRIORITY ZERO: When referring to a deceased person





Simulation

Traci Reavis



FEMA

Simulation Quick Hits



CERT

- 30 New Students!!
- Simulation
 - 37 CERT members participated in planning and execution
 - Total hours logged: 733
 - Planning: 461 hours
 - 276 of which were moulage (63%)
 - Execution: 272 hours – 37% of total

Victims

- 78 Sign-ups
 - 47 Total Victims (not counting CERT members)
 - Includes 11 Fill-in's/last minute adds
 - 10 Cancellations (this was expected)
 - 21 No Shows (NOT expected)





Logistics

Ty Westfall



FEMA

Logistics – Trailer Maintenance



November 7th

18:30 – 20:00



Both Trailers

- Power Tools Testing
- Battery Check / Maintenance
- Break Light / Tire Check
- Ensure contents are secure

CS-1 ERB Bag – Restock (In Training Room)

Logistics – Finances



Finance Update



Sept. CERT Logistics Balance	\$556.91	
Cash from Radios	\$30.00	
		\$586.91
Expenses		
Recycle Bags & Trash Stands	(\$70.00)	
		(\$70.00)
Oct. CERT Logistics Balance		\$516.91

Logistics – Questions



Logistics@AllenTXCERT.org



Open Discussion



FEMA